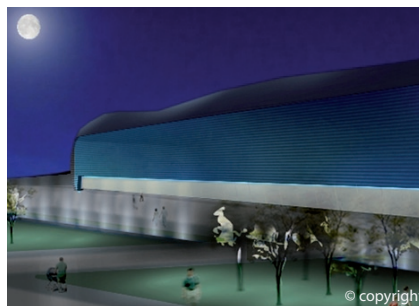
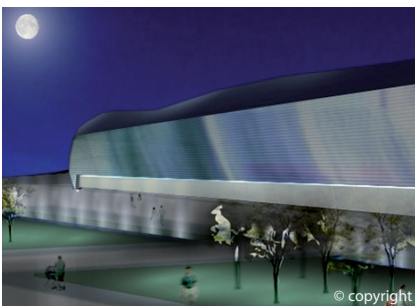
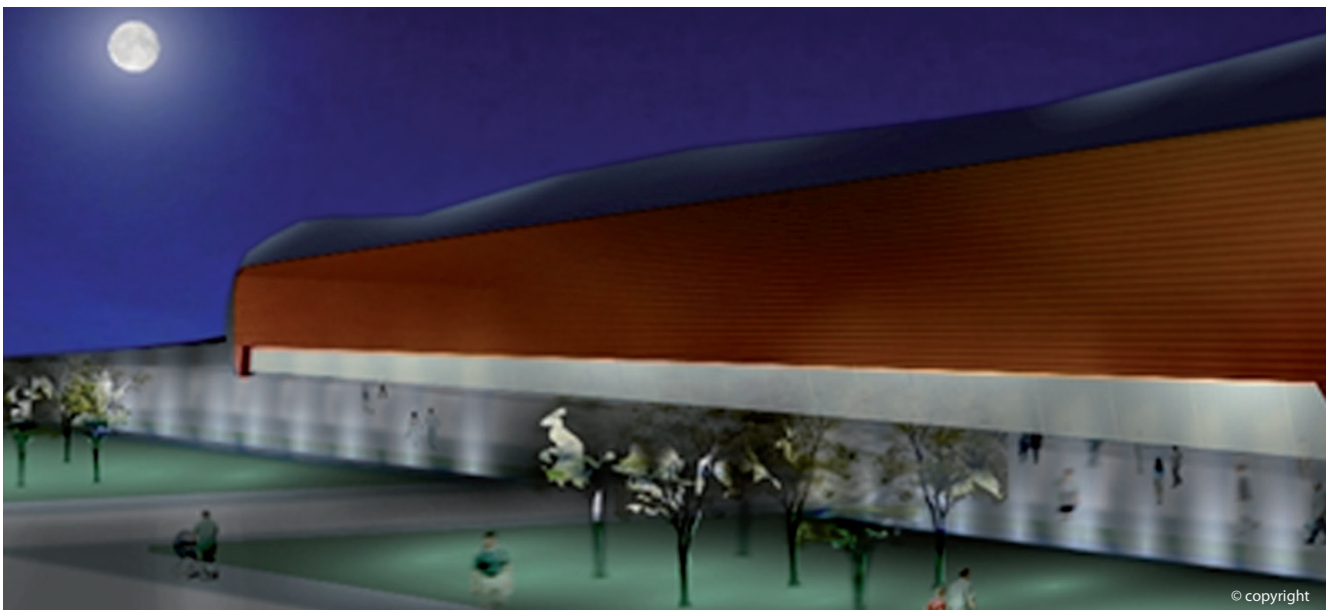


## LAMEZIA TERME AIRPORT

COSENZA - ITALY



### Credits

**Category:** Competition  
**Client:** SACAL Spa  
**Location:** Cosenza - Italy  
**Architect:** Studio Rotella  
**Type of work:** Interior and Exterior Lighting  
**Lighting Design:** Filippo Cannata  
**Lighting Design team:** N. Fiorillo, M. Tremigliozi  
**Completed:** in progress

The idea of the great technological "skin" bright and mutable, flexible in its graphic and chromatic configurations, answers to two important purposes: offer to this part of city an immense visual mirror-screen-newspaper-graffiti able to tell the quarter life and create, at the same time, a point of functional aggregation and general exciting social attraction. The technology together with the poetry brought to new intuitions and new thoughts on the concepts of interactivity and interrelation, both of them have become the new frontier of the relationship between man and light. The light of the external surface of the airport is in harmony with the slow movement of the moon. The inside spaces are characterized by the great "lanterns of light" that is a penetrations of natural light. Light will fill these places with suggestion and memory; a distant and mythical memory, connected to the passage and the trip of Ulysses. A warm and pleasant light like Argon will welcome all the passers-by and will conduct them in a sure and pleasant trip. The employed led light sources are in harmony with the environmental sustainability of the project.